

alphabox

new generation drawer systems



NEW GENERATION

Drawer Systems



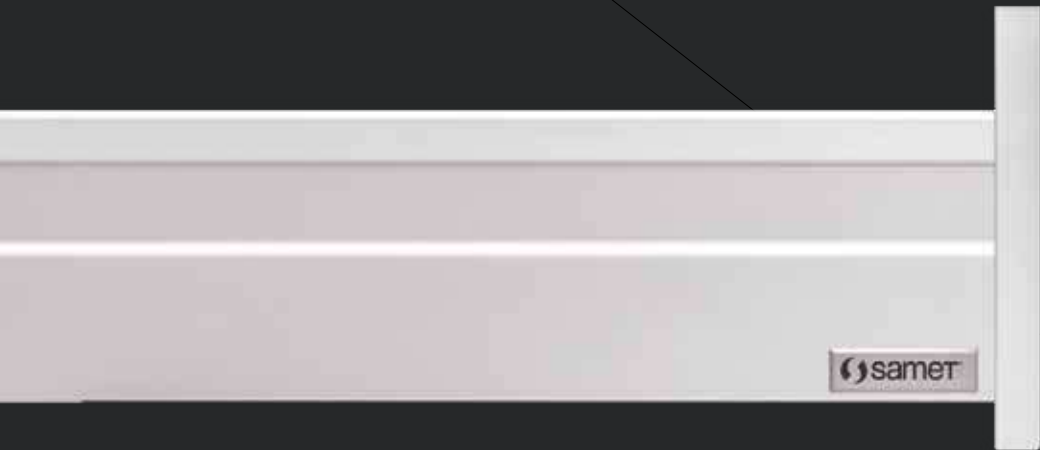






MAXIMUM COMFORT

Sleek design maximises space and comfort in drawers.



samer



samer



samer

WHITE

GREY

ANTHRACITE

COLOURS

Design freedom with impressive
colour options.





AHEAD OF ITS TIME

Alphabox, ahead of its time design with minimalist form...

Alphabox provides an innovative and ideal touch to living areas with its perfect motion technology and modern lines.





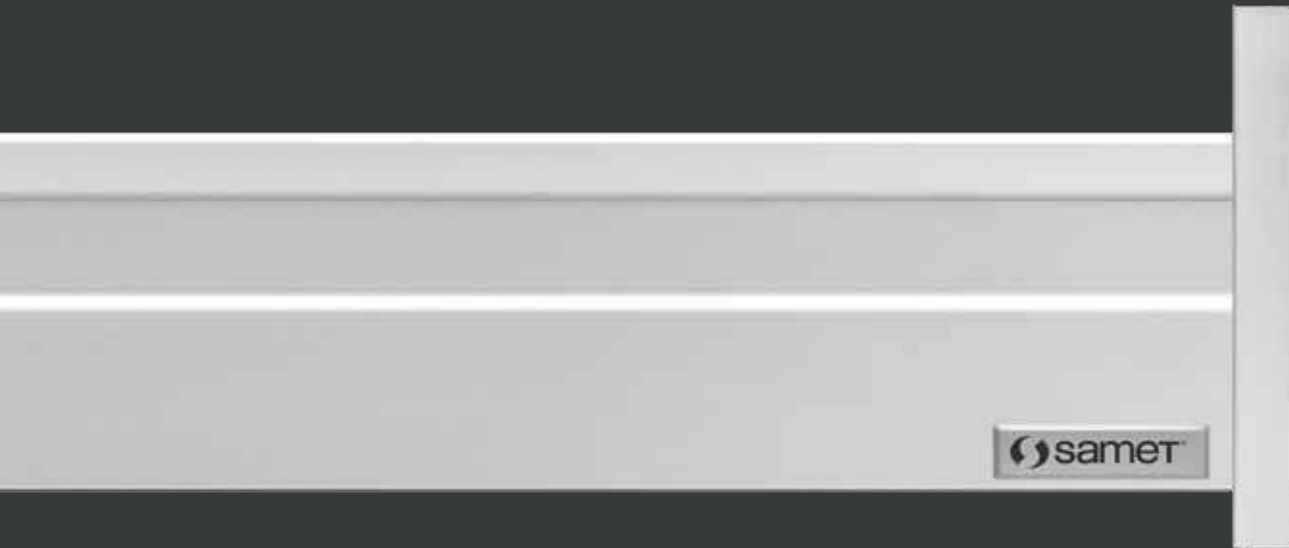
**PERFECT
FUNCTION**



270 mm



350 mm



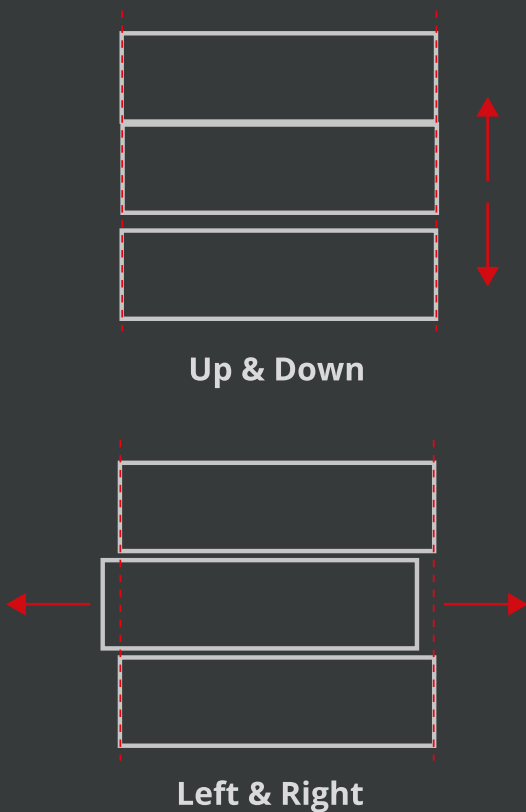
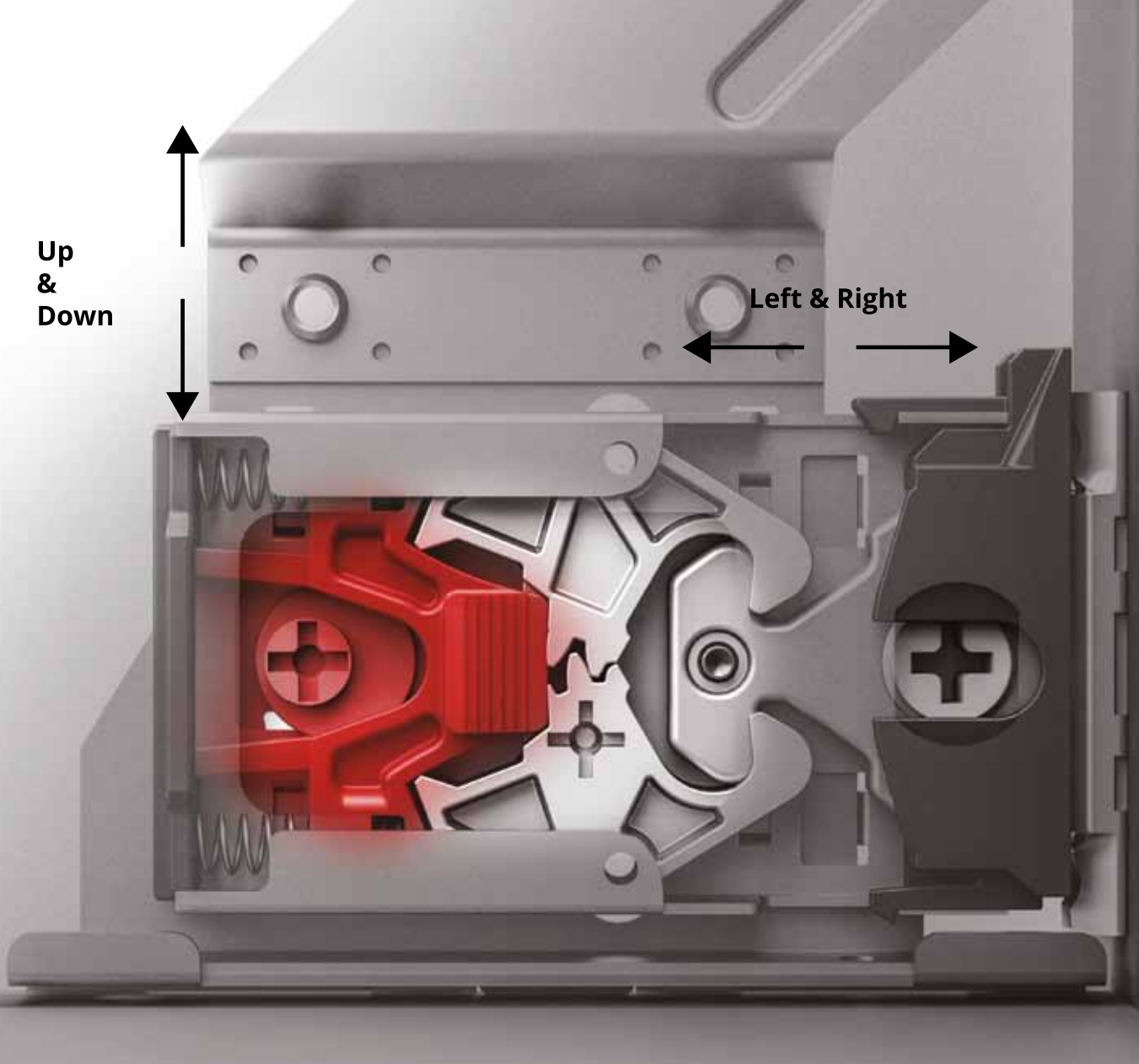
..... **600 mm** 

Drawer size alternatives varies from
270 mm - 600 mm.

SYNCHRONI- SATION

Perfect movement feature with advanced synchronisation technology.





HEIGHT & SIDE

Height and side adjustments are quick and easy with a special mechanism assembled inside the drawer.



- Exclusive Tool-less assembly and disassembly.
- No cutting process for the base panel.





ADVANCED TECHNOLOGY



- Push-Open
- Soft Close
- Push Open-Soft Close

With high loading capacity, state-of-the-art synchronisation technology and impeccable opening and closing features, drawers open with a simple touch and close in complete silence.



**ELEGANT
MODERN**



INVARIA Inner Drawer Systems

Alphabox offers unique and convenient solutions in inner drawer systems with elegant and modern designs.



alphabox

new generation drawer systems



www.samet.com.tr



 facebook.com/SametGroup

 twitter.com/SametGroup

 linkedin.com/company/sametgroup