

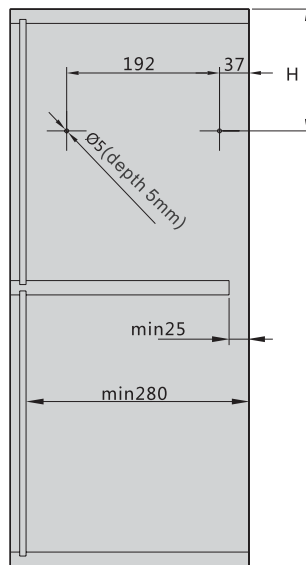
TOP-STAYS ST

SYSTEM OTWIERANIA GÓRNYCH SZAFEK
DO DRZWI ŁAMANYCH
LIFTING SYSTEM



Wymiary montażowe (mm) - Drzwi symetryczne / Installation dimensions (mm) - Symmetrical doors

Wymagana przestrzeń
Peg position and space requirement

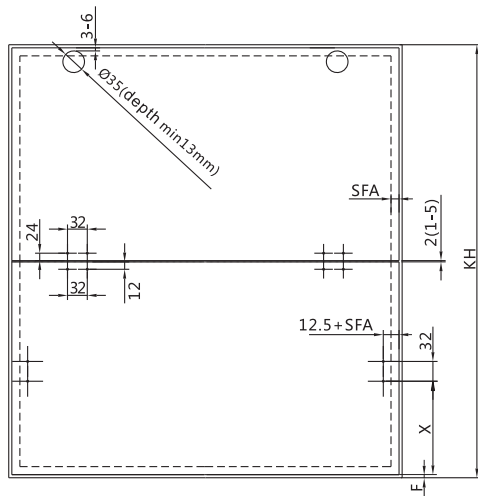


Wysokość szafki KH (mm) Cabinet height KH (mm)	H (mm)
480-589	KHx0.3-28
590-1040	KHx0.3-57

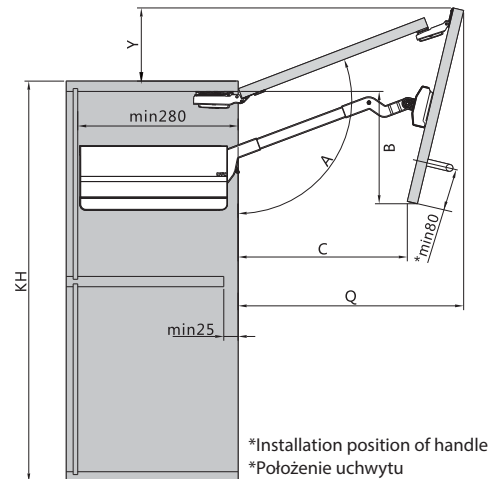
E.G.
Wysokość szafki KH (mm)=500
Cabinet height KH (mm)=500
H=500x0.3-28=122

Wysokość szafki KH (mm)=800
Cabinet height KH (mm)=800
H=800x0.3-57=183

Montaż drzwi - drzwi drewniane i szerokie ramki aluminiowe
Door Assembly - wooden doors and wide alu frames

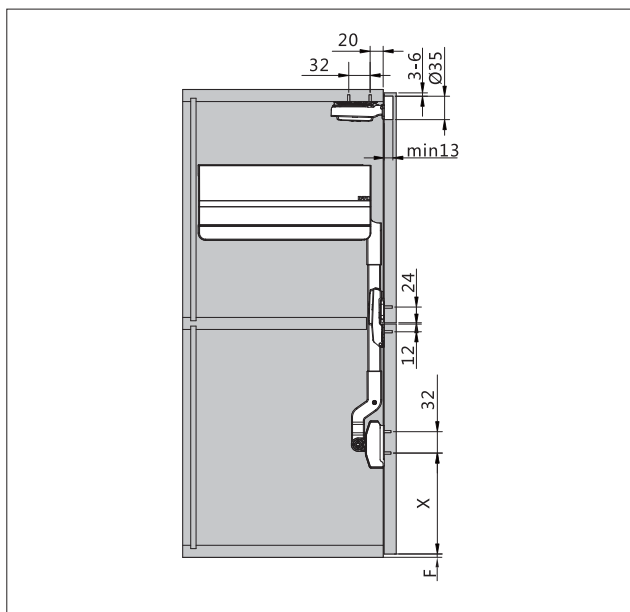


Listwa wieńcowa
Cornice / crown moulding clearance

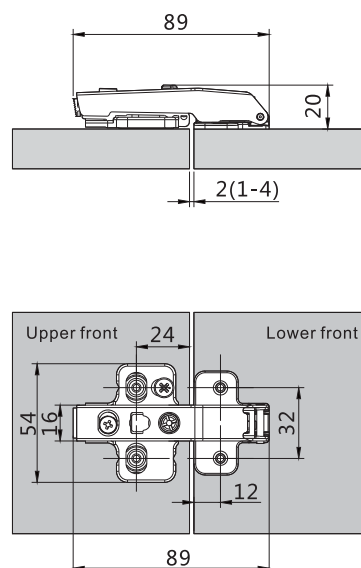


Cabinet height KH(mm)	X(mm)		E.G. Cabinet height KH=600 H=600x0.3-57=123 S=356 (see table below) Gap F=2 X=600-123-356-2=119			
	KH-H-S-F		B(mm)	C(mm)	Q(mm)	Y(mm)
480-1040						
Cabinet height KH(mm)	S(mm)	A(°)	B(mm)	C(mm)	Q(mm)	Y(mm)
480-529	301	~115-105	109-156	257-210	278-323	109-76
530-589	326	~115-105	123-180	280-223	300-354	121-77
590-649	356	~115-105	141-194	308-224	327-384	132-84
650-729	386	~115-102	160-228	335-226	355-428	144-74
730-799	426	~115-105	181-250	372-293	390-450	162-108
800-879	461	~115-105	202-280	404-318	422-494	176-115
880-959	501	~115-105	225-301	440-361	458-529	194-134
960-1040	541	~115-105	245-335	476-405	493-566	214-148

SFA=Polożenie frontu / Door overlay on the side panel
F=Szczelina / Gap



Zawias środkowy
Centre hinge

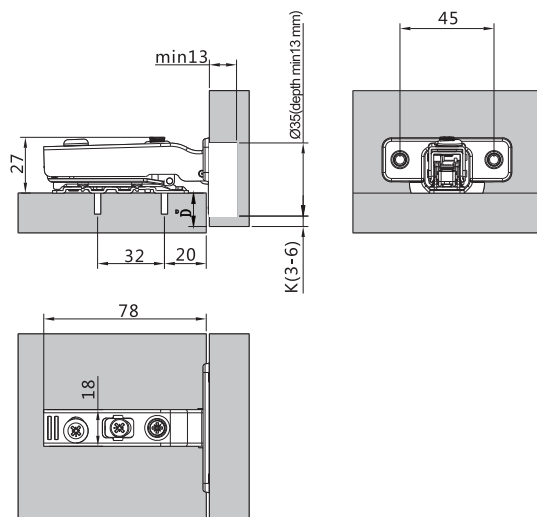


Liczba potrzebnych zawiasów: / Number of hinges needed for each door:

Użyj 3 zawiasów dla szerokości szafy powyżej 1200 mm i wadze drzwi powyżej 12 kg.
Use 3 hinge for cabinet width over 1200mm and door weight over 12kg.

Użyj 4 zawiasów do szaf o szerokości powyżej 1800 mm i wadze drzwi powyżej 20 kg.
Use 4 hinge for cabinet width over 1800mm and door weight over 20kg.

Zawias 120°
120° Hinge



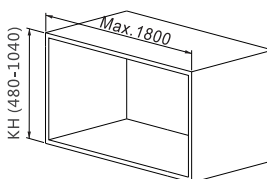
Odległość wiercenia K(mm) / Drilling distance K(mm)	3	4	5	6
Nałożenie frontu / Door overlay D(mm)	15	16	17	18

Rekomendowana zawartość zestawu / Recommended kit Package

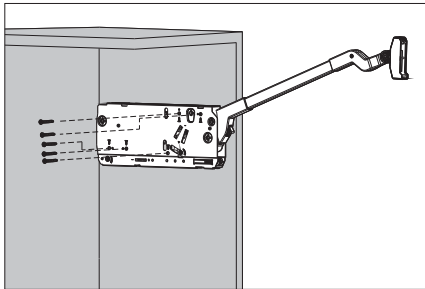
<p>1 x Mechanizm 1 x Lift mechanism set</p>	<p>1 x Komplet zaślepek 1 x Cover cap set</p>	<p>1 x Komplet zawiasów 120° 1 x 120° hinge set</p>	<p>1 x Komplet prowadników do zawiasów 120° 1 x Mounting plate set for 120° hinge</p>	<p>1 x Zaślepki na ramię zawiasów 1 x Decoration cover set for hinge arm</p>
<p>1 x Komplet zawiasów środkowych 1 x Centre hinge set</p>	<p>1 x Komplet prowadników do zawiasów środkowych 1 x Mounting plate set for centre hinge</p>	<p>1 x Komplet mocowania frontu 1 x Front mounting plate set</p>	<p>Ø4X16mm Ø4X38mm</p> <p>Komplet wkrętów 20x16mm Komplet wkrętów 10x38mm 20x16mm wooden screws 10x38mm wooden screws</p>	

Tabela doboru siły oraz ilości podnośników w zależności od wagi frontu z uchwytem Usago Quantity of Lift Mechanism

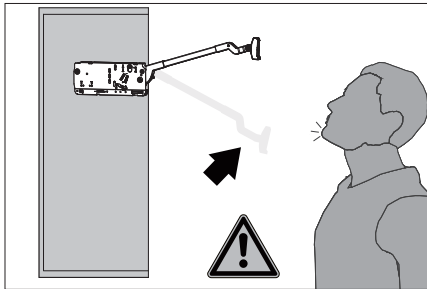
Wysokość szafki KH(mm) Cabinet height KH(mm)	Waga frontu z uchwytem (kg) Door weight incl handle weight (kg)
480-529	5.0-10.0(2.5-5.0 to use 1 lift)
	9.6-16.0
530-589	4.5-8.9(2.3-4.5 to use 1 lift)
	8.7-14.4
590-649	4.1-8.1 (2.0-4.1 to use 1 lift)
	7.8-13.0
650-729	3.7-7.2 (1.8-3.7 to use 1 lift)
	7.0-11.6
	11.5-19.8
730-799	3.2-6.5
	6.3-10.6
	10.5-18.1(15.7-27.1 to use 3 lift)
800-879	5.8-9.6
	9.5-16.5(14.2-24.7 use 3 lift)
880-959	5.2-8.8
	8.7-15.1(13.0-22.6 use 3 lift)
960-1040	4.8-8.1
	8.0-13.9(12.0-20.8 use 3 lift)



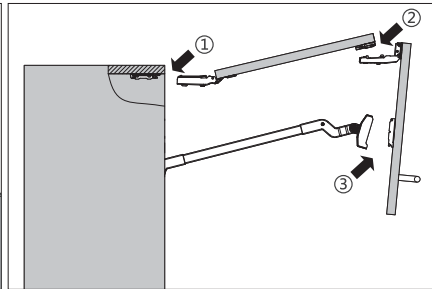
Montaz / Assembly



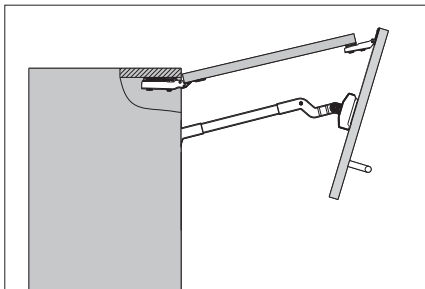
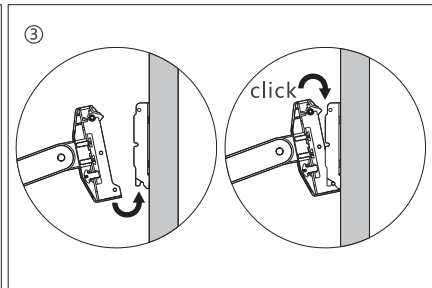
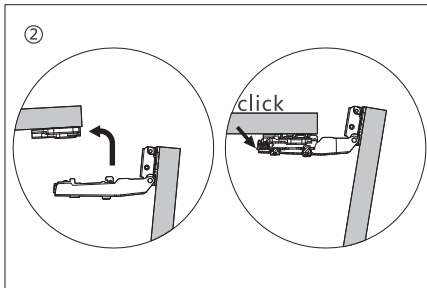
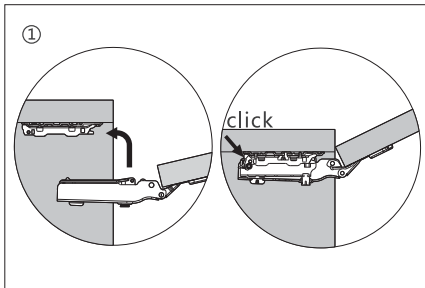
Montaz / Assembly



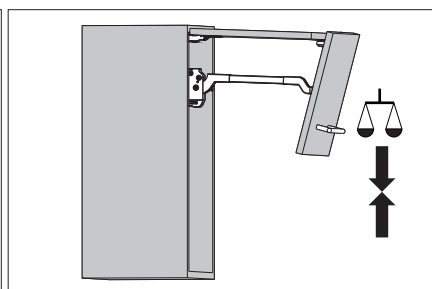
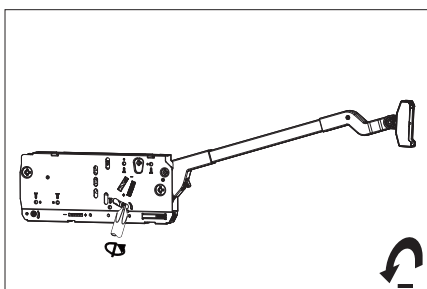
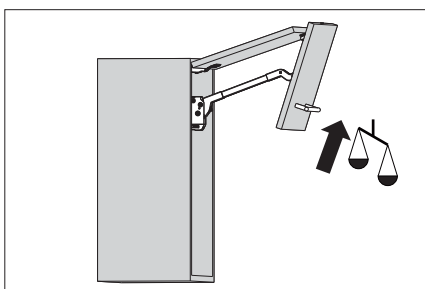
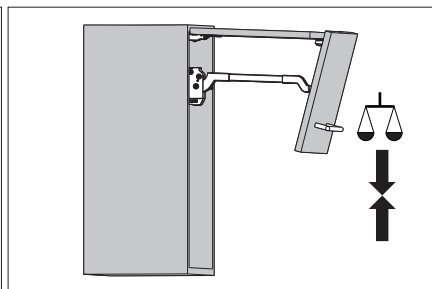
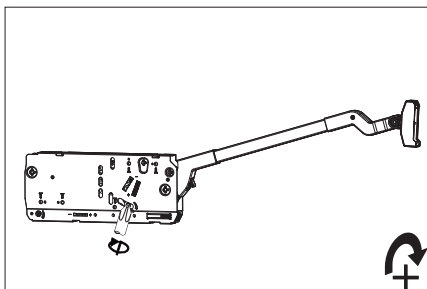
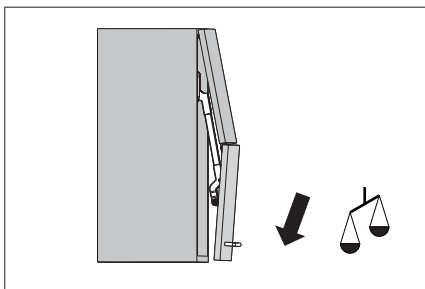
Ramie podnosnika może wyskoczyć i spowodować kontuzje. Nie zamykaj ramienia bez zamontowanego frontu.
The arm of this device could spring up and cause injury. Do not push the arm down without door attached.



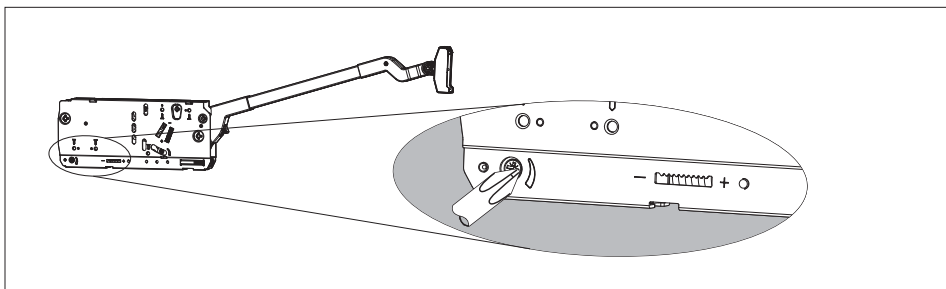
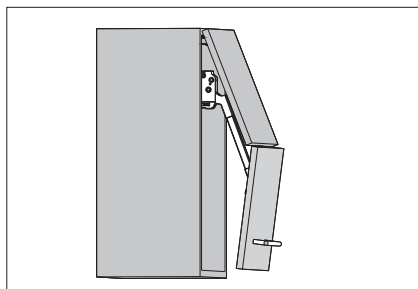
Montaz frontu / Door assembly



Regulacja siły otwarcia / Hovering Adjustment

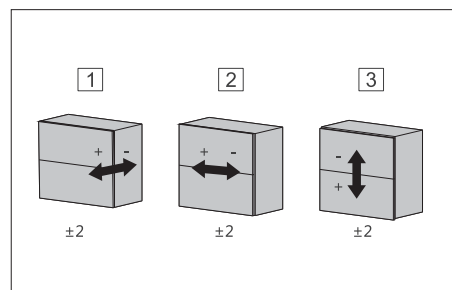
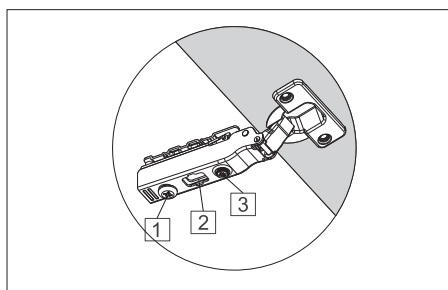
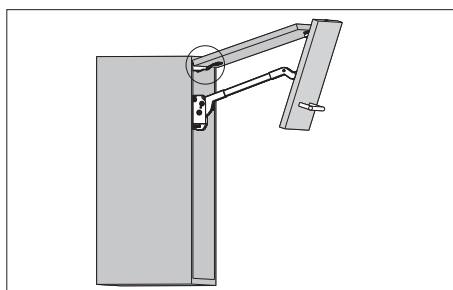


Regulacja siły domyku / Closing Speed Adjustment



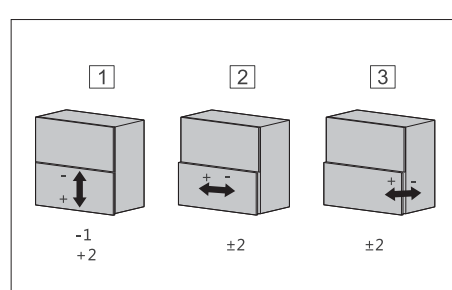
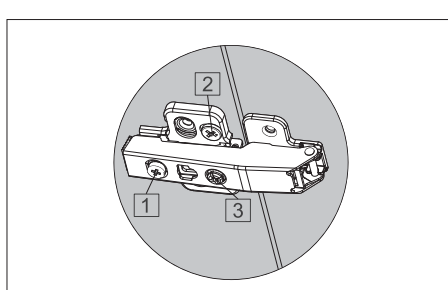
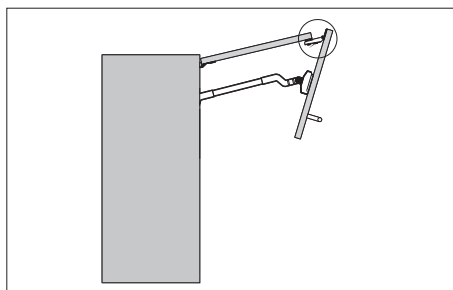
- "+" Zwiększenie siły domyku (obróć śrubę regulacyjną przeciwnie do ruchu wskazówek zegara)
- "-" Skrócenie siły domyku (obróć śrubę regulacyjną zgodnie z ruchem wskazówek zegara)
- "+" Increasing soft-closing time (turn adjustment screw counter-clockwise)
- "-" Reducing soft-closing time (turn adjustment screw clockwise)

Regulacja frontu górnego / Upper front adjustment



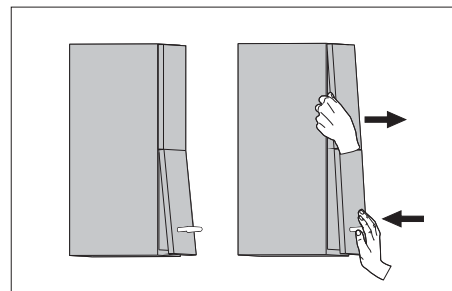
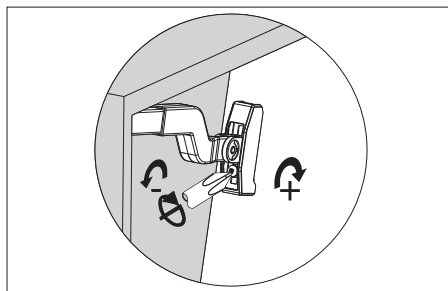
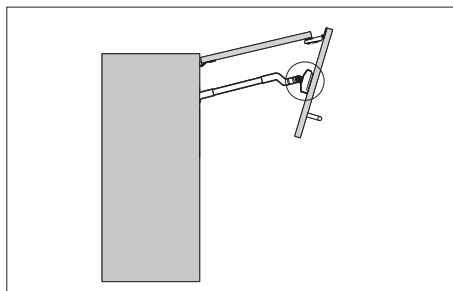
Zawias 120° / 120° hinge

Regulacja frontu dolnego / Lower front adjustment



Zawias środkowy / centre hinge

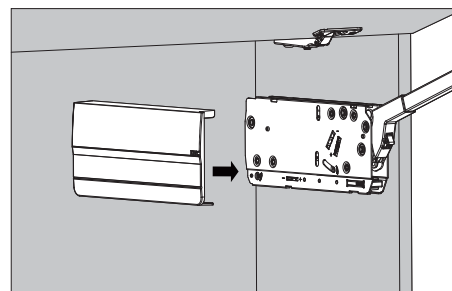
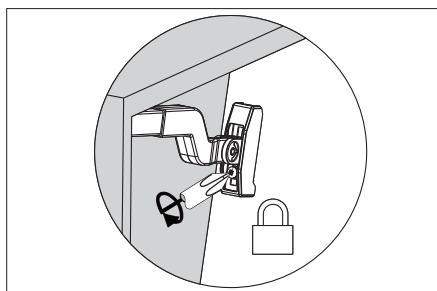
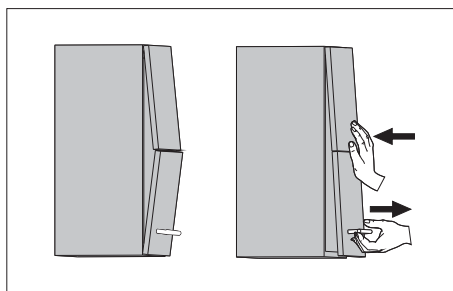
Montaż / Assembly



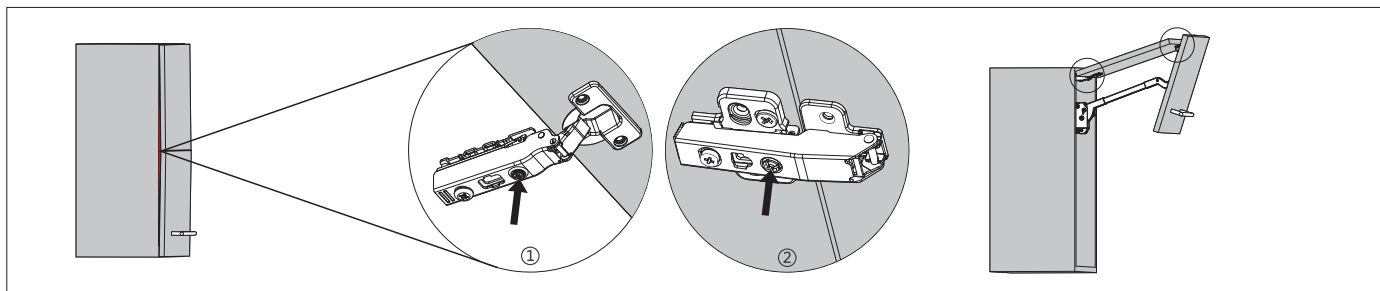
"+"
"-"

- "+" Loose the screw properly when the automatic positioning is too tight to move during door adjustment
- "-" Tighten the screw properly when the automatic positioning is too loose and doesn't work during door adjustment

Regulacja pozycji frontu
Adjust positions of the doors

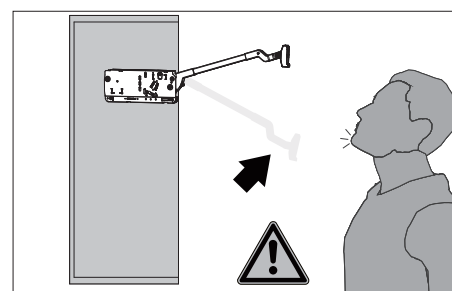
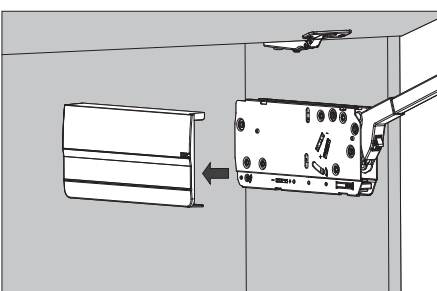
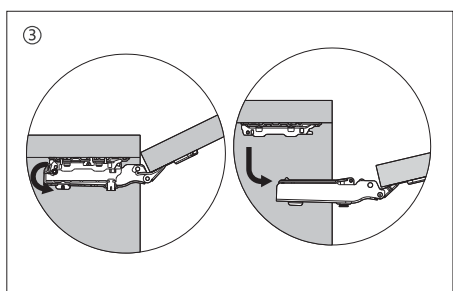
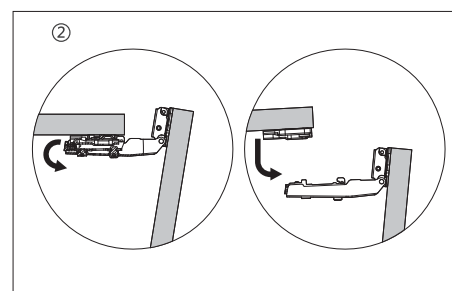
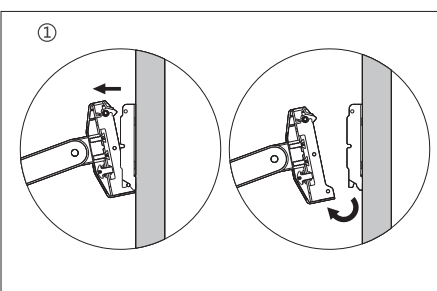
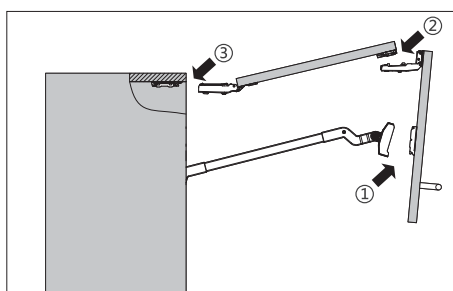


Śruba blokująca / Lock screw

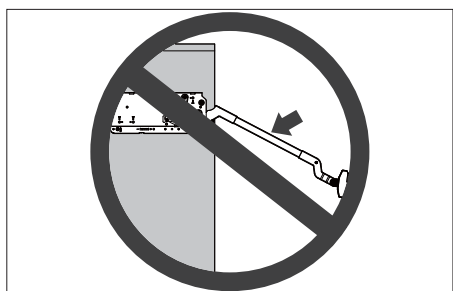


Jeśli między drzwiami a szafką jest niewielka szczelina; dokładnie wyreguluj pozycje drzwi za pomocą śrub regulacyjnych
If there is a small gap between the doors and the cabinet side; fine-tune the positions of the doors with the adjustment screws

Demontaż / Removal



Ramię podnosnika może wyskoczyć i spowodować kontuzje.
The arm of this device could spring up and cause injury.



Nie zamykaj ramienia bez zamontowanego frontu.
Do not push the arm down without door attached.